

## BASEHOR LAND FOR DISTRIBUTION CENTER

NORTHEAST OF 147TH STREET AND PARALLEL ROAD • BASEHOR, KS

### PROPERTY FEATURES:



362.8+ acres available for a **DISTRIBUTION CENTER**



**ACCESS** to the property via Leavenworth Road and Parallel Street with additional access via Parallel Lane



1/2 mile from **K-7 HIGHWAY**, one of the busiest state highways in the area



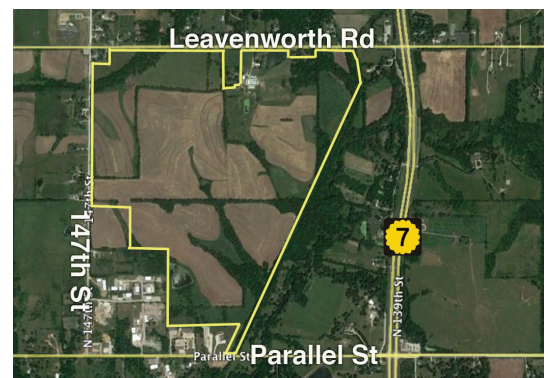
Currently in unincorporated Leavenworth County; likely to be **ANNEXED** by Basehor



Located in **EXCELLENT** Basehor-Linwood School District with consistently high ACT scores



**LESS THAN 5 MILES WEST** of the Kansas Speedway entertainment district



### CONTACT:

**STEVE JACK**  
 Leavenworth County  
 Development Corporation (LCDC)  
 913.727.6111 • [sjack@lvcountyyed.org](mailto:sjack@lvcountyyed.org)

**KEVIN TUBBESING**  
 The Land Source  
 913.562.5622 • [Kevin@TheLandSource.com](mailto:Kevin@TheLandSource.com)



**LEAVENWORTH COUNTY**  
**DEVELOPMENT CORPORATION**

LCDC ensures access to critical partners to accelerate and maximize investment for companies looking to start up, relocate or expand. With streamlined permitting, customized incentives, market-ready inventory — LCDC is **designed to deliver.**