

BASEHOR LAND FOR DISTRIBUTION CENTER

NORTHEAST OF 147TH STREET AND PARALLEL ROAD • BASEHOR, KS

PROPERTY FEATURES:



362.8+ acres available for a **DISTRIBUTION CENTER**



ACCESS to the property via Leavenworth Road and Parallel Street with additional access via Parallel Lane



1/2 mile from **K-7 HIGHWAY**, one of the busiest state highways in the area



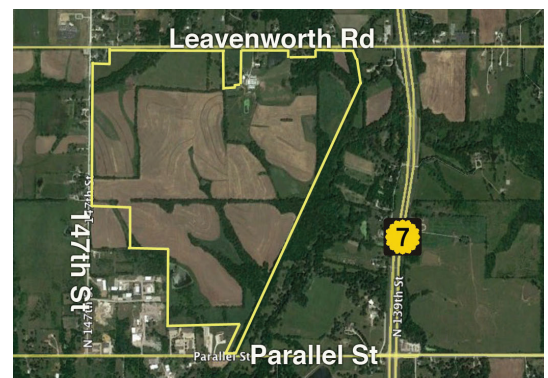
Currently in unincorporated Leavenworth County; likely to be **ANNEXED** by Basehor



Located in **EXCELLENT** Basehor-Linwood School District with consistently high ACT scores



LESS THAN 5 MILES WEST of the Kansas Speedway entertainment district



CONTACT:

LISA HAACK
 Leavenworth County
 Development Corporation (**LCDC**)
 913.727.6111 • LHaack@LVcountyED.org

KEVIN TUBBESING
 The Land Source
 913.562.5622 • Kevin@TheLandSource.com



LEAVENWORTH COUNTY
DEVELOPMENT CORPORATION

LCDC ensures access to critical partners to accelerate and maximize investment for companies looking to start up, relocate or expand. With streamlined permitting, customized incentives, market-ready inventory — LCDC is **designed to deliver.**